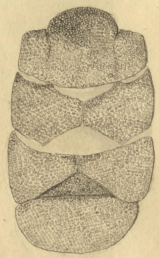




Himalaya
 Nelson Pap No. 8
 Schlegelweid

Aeroplanel
 Milacium Schlegelweidi

5.

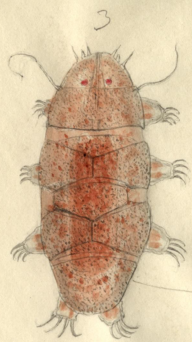


diff. grünergelber Zellen.

Echiniscus altissimus

14.
4 ev.
Tostedtskille

Mantelrose



die Füßstücker der Mitte gleich groß wie die hinteren
 kleiner als bei Fig 5.

8.
 B.

Echinifus ^{Antoni} ~~algastris~~
 turis

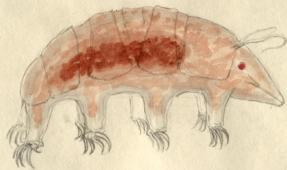
Mandl Ross. Weisskopfs.



1. 11
20. 29.

A. Stenylus; B. Mesomphix
 Himalaya 18000'. Palagint. Dec. 1857. Echiniscus

2



6

Süilly
 Echinos Mifibus

Mano Posa,
 Himalaya

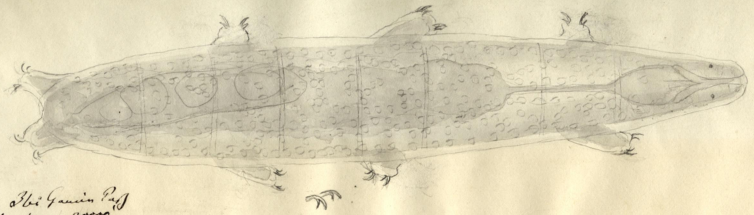
4

Die Puncturen des Schilde sind gleichmäßig klein
wie in Fig 5.

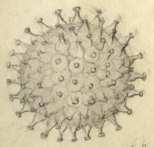
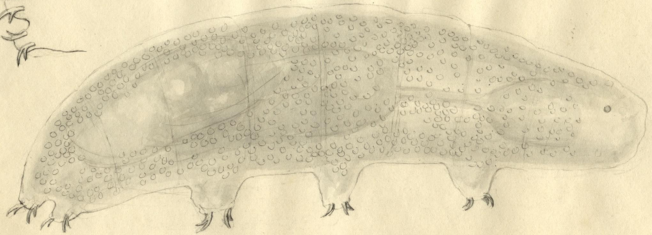
2772



Echiniscus victor
Weigthor, Po. 67, Monte Rosa
1138 Z.



Albi Gamin Puff
Himalaya 20000.



19000

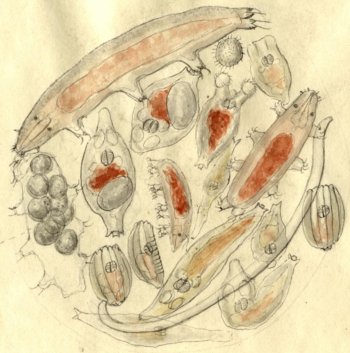
25 *Hydrozoa*

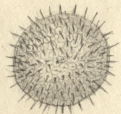
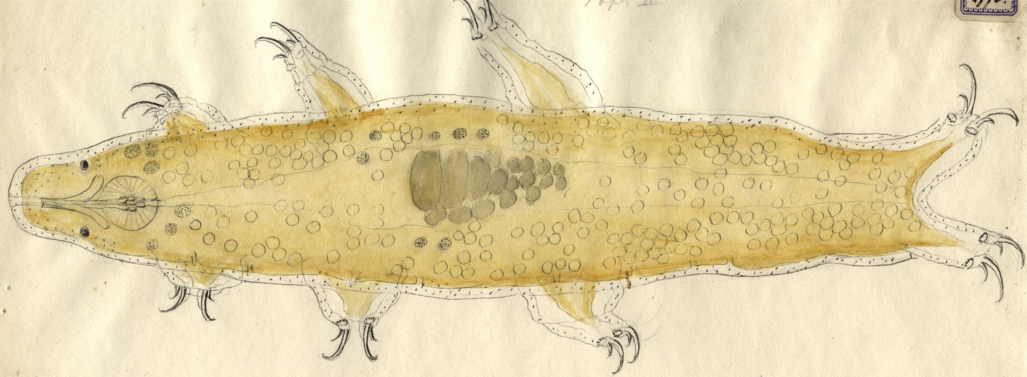
ε.

Macrobiotus eminens.

A

*Macrobolus
Hufelantii*





ε'

Macrobrotus fuscatus.

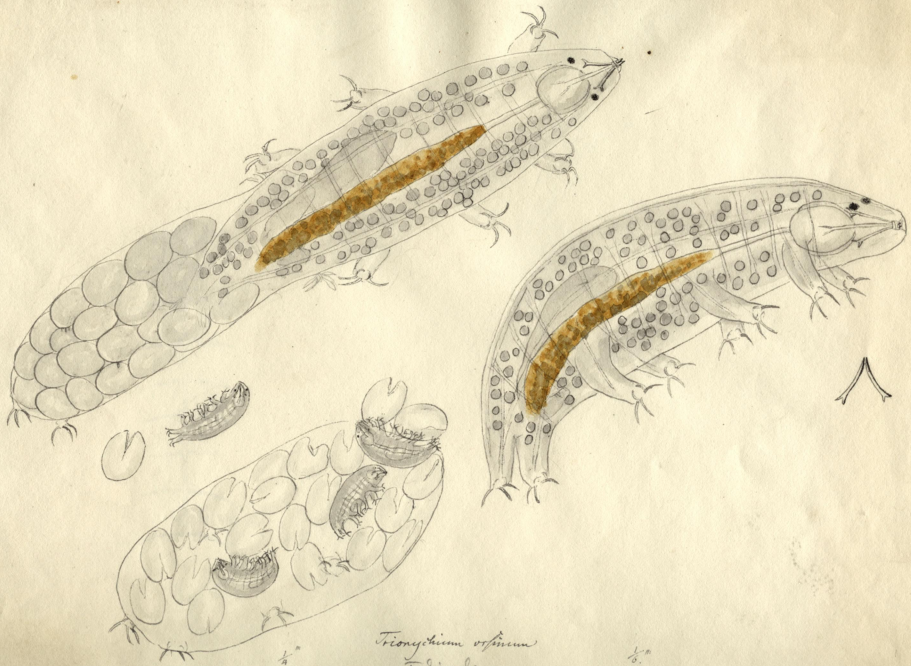
Wiegmann pag. 11138 ped. alt.

Berlin et Lond.
20 Mart. 1855.
20 Mart. 1855.



Mitrospium alpinum

Monte Rosa.



Trionychium vespinum
Tardigrade

ovum $\frac{1}{6}$ pedicel $\frac{1}{4}$

$\frac{1}{8}$

7 April 1832.



Trematium rofimum.

Feldgied

Leipzig, den 7. Jul. 1830. v. L.

1/2^m